



## Royal Wootton Bassett and Cricklade Community Identified Priorities Newsletter. July 2018

### Children and Young People

### RWB and Cricklade Community Area

#### What has been done so far:

1. A **mental health themed 'takeover'** of the Area Board was held on 10<sup>th</sup> January 2018 to raise awareness of mental health and wellbeing, increase understanding and reduce stigma and discrimination. From this, Noremarsch Primary School are looking to host a session for their parents and the community - date tbc.

#### Priorities November 2016

1. Mental and emotional health (65.12%)
2. Educational attainment (63.95%)
3. Positive leisure time activities (55.81%)

2. Breaking news ... the leisure team will be working with select schools on a Bitesize programme in the next academic year. The **Healthy Me Bitesize** programme will work with school years 4 and/or 5. Staff will run some interactive 1-hour weekly sessions for a period of 6 weeks. These will be held within the school during curriculum time with a varying level of flexibility. The programme looks to cover a key range of healthy eating topics with the delivery taking an active approach.
3. A **'Beat the Bugs'** kit from the Wiltshire Council Public Health team is available from RWB library to help schools, community groups and care homes **'Beat the Bugs'** and reduce infection spreading. Please contact your CEM if you would also like a fun, interactive session with a public health nurse, [alexa.davies@wiltshire.gov.uk](mailto:alexa.davies@wiltshire.gov.uk), 01249 706610.

Two local primary schools are currently taking part in **the Big Pledge challenge!**

The Big Pledge is Wiltshire Council's active health campaign, encouraging people to be more active for a host of health benefits. Well done Noremarsch Primary School and Longleaze Primary School! Noremarsch and Longleaze have been delighted with their free equipment. Across the county we now have more schools participating than last year and there has been over 3.25 million minutes of activity logged, which is pretty impressive too.

As a community area, we're not doing badly - currently 4<sup>th</sup> out of 18 so getting better each year.

4. Date for the diary - **the November Area Board meeting will have a youth theme.** The meeting will take place on Wednesday 21<sup>st</sup> November at the Memorial Hall, Royal Wootton Bassett.

**Community Mentoring And Support (CMAS)** provide positive leisure time activities for young people through their Area Board commission in Cricklade, RWB and Lyneham. This includes running a series of local youth groups, doing targeted youth work to address specific issues with the groups, personal development and mentoring for the young people involved.

Please see youth report regarding future provision for the young people in our community area.



**Royal Wootton Bassett and Cricklade Community Identified Priorities Newsletter. July 2018**

**Community Safety**

**RWB and Cricklade Community Area**

**What has been done so far:**

1. Did you know that there is a **Royal Wootton Bassett Neighbourhood Watch scheme?**

The RWB Neighbourhood Watch scheme is managed by co-ordinators who typically cover the road where they live and possibly adjacent roads. They meet three or four times a year, occasionally

with a local Police Officer or Police Community Support Officer to learn from the police. Another purpose of the meetings is to receive information about relevant recent 'activities' within RWB and the surrounds and to report and share concerns that residents have brought to the attention of their area co-ordinator. These have included cold callers, scammers, burglaries and unusual or suspicious behaviour by unknown individuals with the information passing to and from the police.

Between meetings co-ordinators will disseminate information to scheme members by e-mail or personal contact and have, on occasion, been able to assist the police. Information is also available through Wiltshire and Swindon Community Messaging.

There is considerable scope for residents in all parts of RWB to become involved either as a member or co-ordinator. The role of co-ordinator is not onerous as most groups have between 6 and 12 members. It's not essential for a co-ordinator to attend the meetings as the Minutes are emailed out, so just being on the mailing list would keep them informed. Also if there are particular issues co-ordinators want considered by the committee these can be emailed to the Chairman or Secretary of the co-ordinator committee. **Anyone wanting more information or interested in starting a group can contact the Secretary at [martinlansdownembe@hotmail.com](mailto:martinlansdownembe@hotmail.com) or 07941420551.**

2. The Community Area Transport Group continues to work towards making highways improvements, (please see CATG report). The CATG process has been reviewed and is now much simpler and straightforward.

Have you downloaded and checked out **My Wiltshire App?** This can be used to report issues directly to the right Wiltshire Council service, e.g. as a way to report potholes. This makes the process much more efficient and quicker!

An interactive session on how to use the app will be coming up at a future Area Board meeting (hopefully in September at Lyneham Primary School).

3. The Victim Support service is available to support anyone living with domestic abuse, see here for further information: <https://www.victimsupport.org.uk/>

Much help and support is available, no-one needs to suffer in silence. Please find further information and how to spot the signs of abuse here:

<http://www.wiltshire.gov.uk/community-safety-speak-out-wiltshire>

**Priorities November 2016**

1. Anti-social behaviour (70.59%)
2. Highway safety (63.53%)
3. Domestic violence (50.59%)



Royal Wootton Bassett and Cricklade Community Identified Priorities Newsletter. July 2018

Culture

RWB and Cricklade Community Area

What has been done so far:

Yayayay! Our **Celebrating Age** events continue to be a roaring success across the community area, with huge thanks to project lead Rebecca Seymour (@RebSeymour). Celebrating Age have been working with many groups across the community area, including the poetry and prose memory group in RWB library - pop in to see their display 😊

Please see below for the next event on 10<sup>th</sup> July:

Priorities November 2016

1. Affordable access to cultural activities (73.26%)
2. Library use (58.14%)
3. Diversity and social inclusion (58.14%)

**CELEBRATING Age Wiltshire**

## The Rum Tale of the Moonfleet Diamond

Join *Tor Theatre* for a story of daring-do and dastardly deeds

Ancient mystery and new-found love

Song, heartbreak and laughter!

*The Theatre present*

Where: Lyneham Village Hall, SN15 4PD

When: Tuesday 10th July      Time: 11.00—1.00

£2 for Fish & chips (served at 12.30)

Contact Zoë Millington on 0300 1233 442 (option 2)

Celebrating Age: bringing live music, theatre, dance & art to your local community

Logos: Arts Council England, Wiltshire Music Centre 20, PageUK, The Salisbury Museum, Wiltshire Creative, Wiltshire Council, Pound First, Wiltshire's Best, wsun

A **Community Asset List** has been put together to allow community groups, charities and town and parish councils to share their assets locally. If you have an asset you are willing to share with your neighbours, or are needing something which another local parish council or community group might already have and be willing to lend, please get in touch to find out more: [alexa.davies@wiltshire.gov.uk](mailto:alexa.davies@wiltshire.gov.uk), 01249 706610.



**Royal Wootton Bassett and Cricklade Community Identified Priorities Newsletter. July 2018**

**Economy**

**RWB and Cricklade Community Area**

**What has been done so far:**

1. The **Work Wiltshire** site is a fantastic resource with information about local apprenticeships and work experience in Wiltshire: <https://workwiltshire.co.uk/>  
**Apprenticeship opportunities at Wiltshire Council** continue to be promoted via Area Board social media channels. Follow @RWBandCCEM (community engagement manager) and @wilcolyneham (Chair of the Area Board) on Twitter or search for the Royal Wootton Bassett and Cricklade Area Board page on Facebook for updates.

**Priorities November 2016**

1. Apprenticeship and work experience (71.43%)
2. Training and skills (70.24%)
3. Broadband and digital (52.38%)

2. **Did you know there are free FIRST AID courses for baby-sitters?** Available from Wiltshire Council's superb training team - please see here for more details: <https://www.eventbrite.co.uk/e/babysitter-first-aid-tickets-47174482146>  
**Learndirect** offer **FREE training and skills courses** to help people find work. With sufficient demand courses can be put on locally, e.g. developing digital skills. Please find further information here: <http://www.learndirect.com/>. Laurie Wills is your local referrals coordinator for Learndirect: [Laurie.Wills@learndirect.com](mailto:Laurie.Wills@learndirect.com).  
**Improving opportunities for ex-military personnel** through training and skills is an area which John Stanwix from Support Empower Advocate Promote (SEAP) military advocacy is helping to address locally, find out more here: <http://www.seap.org.uk/services/mas/>.

A new community bank service has launched at RWB library!

NatWest has introduced a new role in response to the changing ways customers bank. Community Bankers will work in local communities recently affected by branch closures. As part of their role, they provide customers with personal assistance in accessing the right banking options for their needs across a range of channels.

Caroline Gray has been appointed as NatWest Community Bankers for the Melksham, Marlborough and Royal Wootton Bassett region. Caroline will be based in RWB library on a weekly basis on Thursdays from 10am-12noon.



3. Sadly due to lack of demand the **WithIT** volunteers at the **RWB library on Mondays** look to be closing. A huge thank you to all the volunteers who have helped many local people get to grips with their technology and widen their world. Special thanks to founder, Rita Patel.  
Cricklade digi-champions meet in the **Cricklade leisure centre cafe on Mondays 10-12 noon** and are happy to help! Drop in to find out more.



**Royal Wootton Bassett and Cricklade Community Identified Priorities Newsletter. July 2018**

**Environment**

**RWB and Cricklade Community Area**

**What has been done so far:**

1. RWB&C is working with the **Wiltshire Wildlife Trust** to run a campaign to reduce litter across the community area and encourage people to reduce their waste and re-use materials where possible. Look out for the posters developed by local Academy students up in venues across the community area, just spotted at Tinkers Lane Surgery, RWB.

**Priorities November 2016**

1. Fly tipping and litter (74.12%)
2. Improving rights of way (42.35%)
3. Protecting the countryside (36.47%)

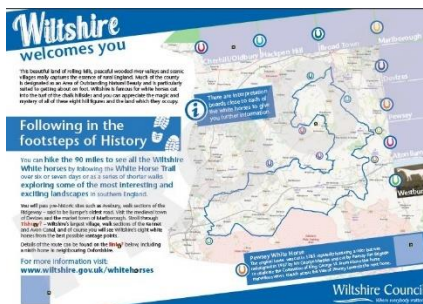
Have you tried **Plogging**? The latest trend is picking up rubbish while you're jogging (or simply out and about). I've been giving it a go and it's great fun! Have a Google as there is lots of information available about 2018's fitness trend.

2. Existing interpretation boards for **Wiltshire's White Horses** will soon be replaced across the county, pending production of the signs. The signs will be updated with QR codes with links to further information about the horses and the White Horse Trail (a walking route which links them together), audio and braille, to make the information available to more people and help encourage people to explore our beautiful county (hopefully alongside taking part in the Big Pledge campaign)! Please find a draft of a new sign at the bottom of the page. The Pewsey sign has been produced and the rest are to follow shortly.

CATG continues to work on the priority to improve rights of way (see separate CATG report).

3. Active community groups who have received community grant funding continue to make good progress improving rights of way, including the Purton Volunteers Footpath Group and Cricklade Dance Common.

The Bradenstoke parish will be taking part in the **WW1 tree planting legacy project**, thank you to the team here for your support in committing to planting and looking after the baby trees.





**Royal Wootton Bassett and Cricklade Community Identified Priorities Newsletter. July 2018**

**Health, Wellbeing and Leisure RWB and Cricklade Community Area**

**What has been done so far:**

**Priorities November 2016**

1. Mental health (75.29%)
2. Healthy lifestyles (68.24%)
3. Support for carers (61.18%)

1. Have you heard of Action for Happiness? How about Happy Cafes? Do you know a café where the norm is to support local people and help make them smile? Please see here to find out more and get in touch if you know a business which might like to become involved in the local area:  
<http://www.actionforhappiness.org/happy-cafe>

Would you be interested in getting involved with a therapy garden to help those in need, like the TWIGS Community Gardens in Swindon? Please contact your CEM if you would like to register your interest. Find out more about TWIGS here: <http://www.twigscommunitygardens.org.uk/>

2. **Seated sports** is a big success in in Royal Wootton Bassett.

The initial seated sports sessions have now been taken over by Josh from Innov8 sports.

This programme is an adapted sports offer for older people, people recovering from an illness or injury or perhaps those who wish to take the first steps towards a healthier lifestyle. All sports and activities take place from a sitting position, allowing participants to take part in a low intensity, highly enjoyable form of physical activity - please have a go, speak to Josh and find flyers at our meeting tonight. The weekly sessions take place from 10am on Thursdays at Royal Wootton Bassett Memorial Hall.

This class has been extended every over week with a Fitness and Friendship Group at the Memorial Hall, which is led by Age UK.



**Royal Wootton Bassett and Cricklade Community Identified Priorities Newsletter. July 2018**

**Older People**

**RWB and Cricklade Community Area**

**What has been done so far - this edition we're focusing on dementia, in honour of Dementia Action Week 2018:**

The week started with a bang, with a huge **THANK YOU to Debbie Lawrence, Tim Mason and Purton Parish Council**. The stellar team put on an inspiring **Dementia Friendly Communities session**, open to parishes across the county to share their experiences, to inspire and to motivate parishes to do more to become dementia friendly.

The Purton team are truly leading the way on this vital piece of work, and we would encourage any parish, community group or individual with a desire to make a difference on this subject to get in touch; [alexa.davies@wiltshire.gov.uk](mailto:alexa.davies@wiltshire.gov.uk).

In support of Dementia Action Week, the Royal Wootton Bassett Caring about Dementia group were also busy! The group here, led by exceptional volunteer Linda Frost, invited 36 people to a very special event which was held at the Manor House Enterprise Centre.

We hosted a Mobile Virtual Dementia Tour Bus which provided an innovative dementia training session giving delegates the opportunity to experience what living with dementia might be like and small ways we can all help those living with dementia and their carers.

The feedback from the delegates was "a feeling of vulnerability, scary, intimidating and confusing" but by having a better understanding of the person with dementia you can change your practice of care to improve their lives.

We hope this event has sparked debate and action to improve support for people living with dementia and their carers.

As a follow up we are arranging Dementia Friends Sessions for companies, organisations, community groups or individuals. The session lasts just 45 minutes and is a simple way to spread awareness and do something which really makes a difference to others. If you would like to book a place please contact Alexa Davies at [alexa.davies@wiltshire.gov.uk](mailto:alexa.davies@wiltshire.gov.uk) and we will arrange a mutually convenient time and place, i.e. at your place of work or an agreed venue.

It is only 45 minutes of your time but it could make a huge difference to others.

**Priorities November 2016**

- 1. Social isolation and loneliness (80%)
- 2. Support for carers (57.65%)
- 3. Dementia (54.12%)





**Royal Wootton Bassett and Cricklade Community Identified Priorities Newsletter. July 2018**

**Transport**

**RWB and Cricklade Community Area**

**What has been done so far:**

1. The **Community Area Transport Group** agrees funding for road safety improvements - currently there are 4/5 schemes that CATG can consider at any one time, please see the CATG report in the agenda pack for further information.

**Priorities November 2016**

1. Road improvement (81.18%)
2. Speeding and road safety (69.41%)
3. Access to public transport (65.88%)

3. The community area is lucky enough to have a **community MPV** which is available for community groups to use free of charge, subject to driver checks and registration. The vehicle is based at Lime Kiln in Royal Wootton Bassett and is already used by the local GP surgeries, Duke of Edinburgh Open Award Centre and the 3M's memory group in Lyneham. Please contact your Community Engagement Manager, alexa.davies@wiltshire.gov.uk, 01249 706610 if you would like to use this vehicle.



**Bradies Connect** timetables are now available from the Area Board section of the RWB library (at the back near the computers at present).

**Stagecoach** have upgraded their 55 Chippenham to Swindon buses and have re-introduced the 54 bus to West Swindon.

**Purton Age Concern** now have their new minibus vehicle, with help from the community grant scheme.

Purton and District Age Concern raised £40,000 through fundraisers and appeals to help pensioners get around town. With two buses in operation the charity is back to full strength, allowing residents to zip along to lunches, trips and doctors' appointments when they need. None of the 950 or so people benefitting from the service will be left behind either – the seven-seater vehicle comes complete with disabled access.

President of the charity Tony Price said: "The village is very kind and we're very lucky that we got it. It means people can get out.

"We've got volunteers who are a great asset to the community to give up their time. They really feel for the people they're carrying and form nice relationships with them."



Emblazoned on the new bus are the names of John Blackwell and Joe Ricketts, who were long-time supporters of the service before they died. John used to be in charge of coordinating the drivers while Joe took care of secretarial duties such as insurance.





**Royal Wootton Bassett and Cricklade Community Identified Priorities Newsletter. July 2018**

**Housing**

**RWB and Cricklade Community Area**

**What has been done so far:**

1. Wiltshire Council is marking Rural Housing Week (2-6 July) by promoting the development of affordable homes in the county.

**Priorities November 2016**

1. Affordable housing (88.24%)
2. Deprivation and poverty (64.71%)
3. Digital engagement and broadband (48.24%)

The authority has joined with Wiltshire Community Land Trust (WCLT) and Community First to set up the Wiltshire Community-Led Housing Project. The project’s officers provide advice and encouragement to communities aiming to develop affordable homes in their area.

Cllr Richard Clewer, Wiltshire Council’s cabinet member for housing, said: “We are seeking out communities who are keen to provide homes for people at affordable prices; to help them start their own CLTs, or explore other ways of providing new affordable homes.

“CLTs are the most common and proven way of delivering local housing schemes that are under the control of the community itself, by buying the freehold or leasehold of a development site.

“Homes provided in this way can be earmarked for local needs and cannot be sold, unless some homes are sold to help create an overall viable scheme.

“The local community does not necessarily have to be the developer and, typically, they will work with a housing association or similar body, such as the council.”

There are about 225 CLTs around the country, with numbers rapidly growing in Wiltshire – including projects at Broad Chalke, Wilton, Seend and Cricklade.

To find out more about community-led housing contact [communityledhousing@wiltshire.gov.uk](mailto:communityledhousing@wiltshire.gov.uk). Further information on the Community Housing Fund and the grant funding which is available, please see [www.wiltshire.gov.uk/housing-community-fund](http://www.wiltshire.gov.uk/housing-community-fund).

2. Commitment to the RWB&C **Child Poverty Action Plan** (as presented at the 20.07.16 Area Board meeting) is ongoing and the Area Board had a presence at this year’s Child Poverty Summit to meet other local groups and organisations working to address this issue and learn more about what can be done to help.

In addition the Area Board continues to work in partnership with the Rise Trust, the RWB LYN group and MOD Lyneham to help address issues relating to deprivation and poverty. The community hub in RWB is envisaged as a space for many more local projects and campaigns.

3. **Superfast Broadband continues to be rolled out across the county.**



**Royal Wootton Bassett and Cricklade Community Identified Priorities Newsletter. July 2018**

**LINKS TO USEFUL INFORMATION:**

[WILTSHIRE INFORMATION NETWORK](#)

[WILTSHIRE JSA NETWORK website](#)

[ROYAL WOOTTON BASSETT & CRICKLADE AREA BOARD JSA report 2016-18](#)

**RWB & C Project Bank – soon to be available on the revised ‘Our Community Matters’ website:**

<http://rwbc.ourcommunitymatters.org.uk/>

***For regular updates from the RWB&C Area Board ...***

*Follow us on Twitter - @RWBandCCEM*

*Facebook – Royal Wootton Bassett and Cricklade Area Board (Page)*

***AND*** *sign up to Our Community Matters for your weekly Royal Wootton Bassett and Cricklade local newsletter: [here](#), we would love to hear from you.*